

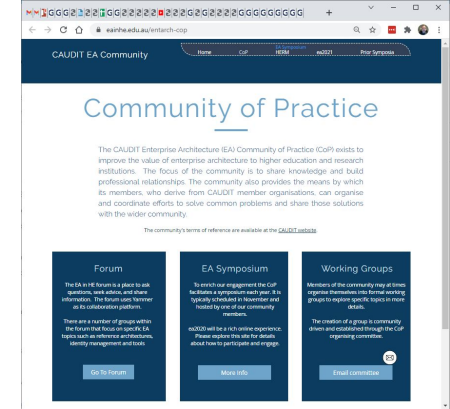
CAUDIT
Enterprise
Architecture
Community



CAUDIT Enterprise Architecture CoP

The CAUDIT Enterprise Architecture Community of Practice:

- Established in 2006
- 180 active members of the CoP
- 51 universities in Australia and New Zealand
- Vibrant community:
 - Online congregations held monthly
 - CAUDIT *Enterprise Architecture in Higher Education Symposium* held annually
- The CAUDIT Higher Education Reference Models Working Group is part of this CoP



Custodianship, the HERM-WG



Karen Modena
Enterprise Architect



Sasanka Abeysooriya
Senior Strategic Adviser



Michelle Phillips
Strategy and Architecture Support Lead



Alan Dent
Manager Digital Architecture



Paul Tasker
Enterprise Architect



Nigel Foxwell
Head, Enterprise Architecture, Strategy, and Risk



jeff kennedy
Enterprise Architecture Manager



Galen White
Pieter Steyn



HERM Evolution

- CAUDIT
- FromHereOn
- V1, 2016
- V2, 2019
- V2.5, 2020
- V2.6.0, 2021

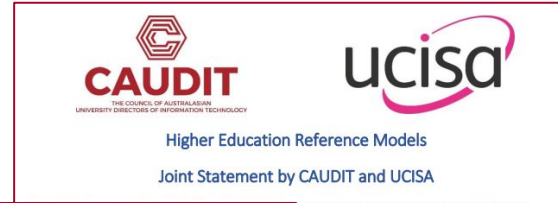


April 2016, announcing availability of the Higher Education Reference Models:

- Mac Lemon, *FromHereOn*
- Michael Kirby-Lewis, President, *CAUDIT*
- Ric Phillips, *CAUDIT Enterprise Architecture Community of Practice*
- Anne Kealley, CEO, *CAUDIT*

HERM Collaboration

- CAUDIT and EDUCAUSE recently signed a Joint Statement of Intent to collaborate and further develop the Higher Education Reference Models.
- This follows a corresponding Joint Statement of Intent signed by CAUDIT and UCISA in April 2021.
- Warm and constructive collaborations are continuing and are deepening — appreciative shout-outs to:
 - Itana Business Architecture Working Group
 - UCISA HERM Working Groups



CAUDIT **EDUCAUSE**

Higher Education Reference Models: Joint Statement by CAUDIT and EDUCAUSE

The executive leadership of EDUCAUSE and CAUDIT support and encourage their respective enterprise and business architecture communities to collaborate and work closely together, explore opportunities and create mutual advantages, and further develop the CAUDIT Higher Education Reference Models as international reference models for the Higher Education sector. This encouragement aligns with a common strategic intent to promote best practice through collaboration and sharing with our communities.

The CAUDIT Higher Education Reference Models were launched in April 2016, and have always been intended for use by institutions beyond Australia and New Zealand. Global applicability is a design principle commitment that guides the ongoing enhancement of these reference models, now in use across more than three-hundred institutions worldwide. The goal of achieving global applicability values international partnerships and seeks to establish a common understanding of how our institutions operate in order to deliver value to our institutions and to the communities they serve.

CAUDIT and EDUCAUSE, notably through partnership with Itana, have already established a collaborative arrangement for further developing the Business and Data Models.

We recognise the valuable contributions of:

CAUDIT	EDUCAUSE
Karen Modena Enterprise Architect La Trobe University	Jim Phelps Director, Enterprise Architecture & Strategy University of Washington
Nigel Foxwell Head, Enterprise Architecture & Strategy James Cook University	Louis King Enterprise Architect Yale University
jeff kennedy Enterprise Architecture Manager The University of Auckland	Dana Miller Business Analyst Miami University

Support and encourage their respective Enterprise Architecture communities to collaborate and work closely together, to explore opportunities and mutual advantages, and to work closely together to develop the Higher Education Reference Models as international reference models for the Higher Education sector. This encouragement aligns with a common strategic intent to promote best practice through collaboration and sharing with our communities.

The CAUDIT Higher Education Reference Models were launched in April 2016 and have always been intended for use by institutions beyond Australia and New Zealand. Global applicability is a design principle commitment that guides the ongoing enhancement of these reference models, now in use across more than three-hundred institutions worldwide. The goal of achieving global applicability values international partnerships and seeks to establish a common understanding of how our institutions operate in order to deliver value to our institutions and to the communities they serve.

CAUDIT and EDUCAUSE, notably through partnership with Itana, have already established a collaborative arrangement for further developing the Business and Data Models.

We recognise the valuable contributions of:

UCISA

Lex Wilkinson
Enterprise Solutions Architect
Sheffield Hallam University

Stéphane Pajon
Enterprise Application Architect
Coventry University

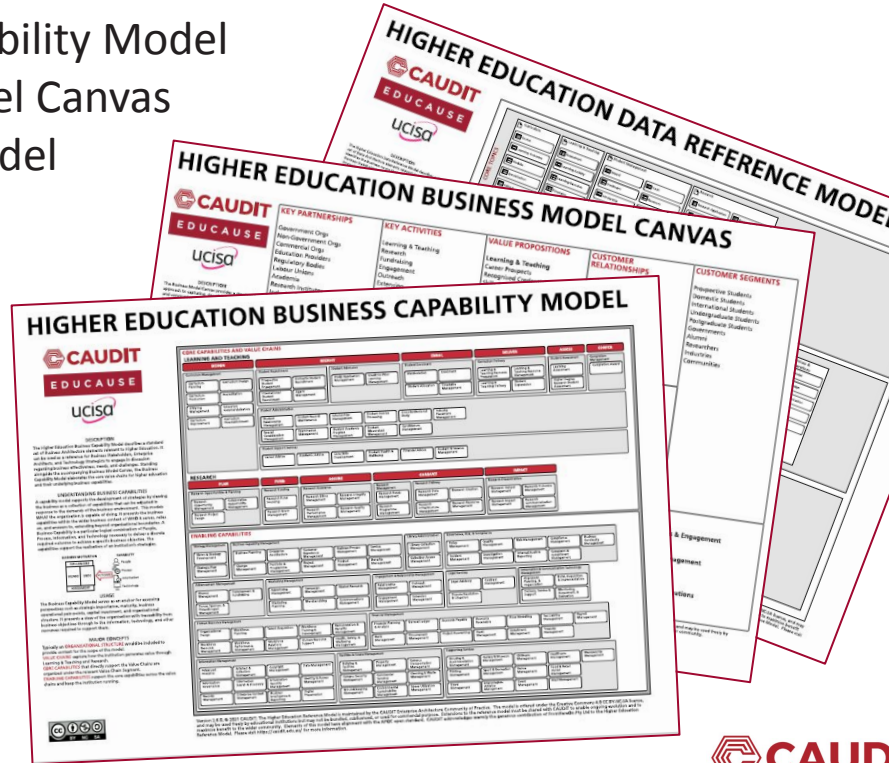
The Higher Education Reference Models

Artefacts:

- Business Reference Model
 - Business Capability Model
 - Business Model Canvas
- Data Reference Model

Collateral:

- Poster
- Catalog
- Changelog
- Archimate (beta)
- Visio (beta)



```
*readme.txt - Notepad
File Edit Format View Help

HERM

=====
CAUDIT Higher Education Reference Models
Version 2.6.0
Offered for use under the Creative Commons 4.0 CC BY-NC-SA license
=====
01 October 2021
=====
This readme accompanies the "Higher Education Reference Models" distribution,
the "HERM", which consists of various files bundled into a ZIP archive.

The "HERM" consists of three major components:
1. Business Capability Model
2. Business Model Canvas
3. Data Reference Model

Supporting information, context, and opportunities to be involved in the future
evolution of the HERM are available from:

* CAUDIT Enterprise Architecture Community of Practice
https://caudit.edu.au/

* UCISA Enterprise Architecture Special Interest Group
https://www.ucisa.ac.uk/

* EDUCAUSE ITANA Enterprise, Business, & Technical Architects Community Group
https://www.educause.edu/

The ZIP archive contains the following files:

== Business Capability Model ==
HERM-BCM-V260-model.pdf // poster
HERM-BCM-V260-catalogue.xlsx // catalogue of descriptions
HERM-BCM-V260-changelog.xlsx // changelog from previous version
HERM-BCM-V260-archimate-beta.archimate // beta version ArchiMate
HERM-BCM-V260-model.vdx // beta version Visio VDX
HERM-BCM-V260-model.vsdX // beta version Visio VSDX

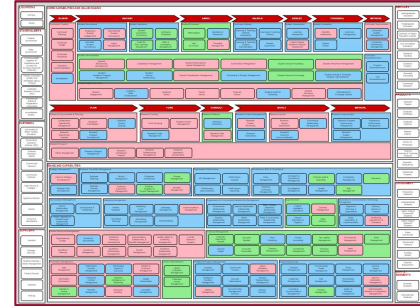
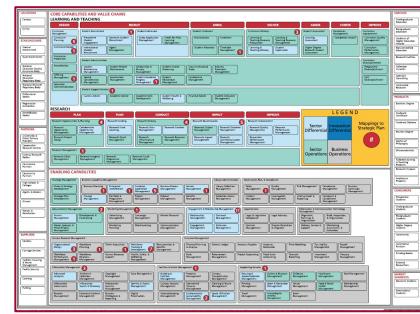
== Business Model Canvas ==
HERM-BMC-V260-canvas.pdf // poster
HERM-BMC-V260-supporting.pdf // supporting explanatory notes
HERM-BMC-V260-visio-beta.vdx // beta version Visio VDX
HERM-BMC-V260-visio-beta.vsdX // beta version Visio VSDX

== Data Reference Model ==
HERM-DRM-V260-model.pdf // poster
HERM-DRM-V260-catalogue.xlsx // catalogue of descriptions
HERM-DRM-V260-changelog.xlsx // changelog from previous version
HERM-DRM-V260-archimate-beta.archimate // beta version ArchiMate
HERM-DRM-V260-visio-beta.vdx // beta version Visio VDX
HERM-DRM-V260-visio-beta.vsdX // beta version Visio VSDX
```

Using the models

The Higher Education Reference Models help institutions to:

- use enterprise storytelling to engage effectively with stakeholders
- guide better decision-making for strategic investment
- identify dependency and risk footprints for large projects
- increase the value and efficiency of their architecture teams
- foster 'whole of institution' thinking
- facilitate the exchange of architectural knowledge and good practice throughout the sector
- support interoperability and collaboration
- many other use-cases: <https://bit.ly/herm-260-compendium>



Where can you access the models?



<https://www.caudit.edu.au/ea-framework>

EDUCAUSE

<https://library.educause.edu/resources/2021/9/the-higher-education-reference-models>



email: admin@ucisa.ac.uk



email: execsupport@ucisa.ac.uk



EDUCAUSE



UCISA
Enterprise
Architecture
Community



UCISA Enterprise Architecture Group

- Representing a growing discipline in the UK Higher Education sector
- Active community of around 200 members
- Representing over 100 Universities in the UK & Ireland
- Collaboration and support through the sharing of knowledge, experience, case studies and templates
- Welcome new members (email admin@ucisa.ac.uk to join!)
- Visit our group website:

<https://www.ucisa.ac.uk/Groups/Enterprise-Architecture-Group>

UCISA Reference Models Working Group

One working group with two workstreams:

- **BCM & BMC workstream** led by Rosie Coffey (University of Limerick) and Gazelleh Moradi (Coventry University)
- **DRM workstream** led by Russell Boyatt (University of Warwick)

UCISA Reference Models Working Group

- Jointly develop and promote an evolving set of global reference models for Higher Education
- Explore how we might harmonise the Business Reference Models with existing models in the UK
- Demonstrate how the reference models can be used by our community to deliver value within their universities
- Engage and develop links with a global network of Higher Education Enterprise Architecture communities

EDUCAUSE
Itana
Enterprise
Architecture
Community





Jim Phelps

Director of Enterprise Architecture and Strategy, University of Washington
Founder and Chair, Itana

EUNIS Enterprise Architecture Community

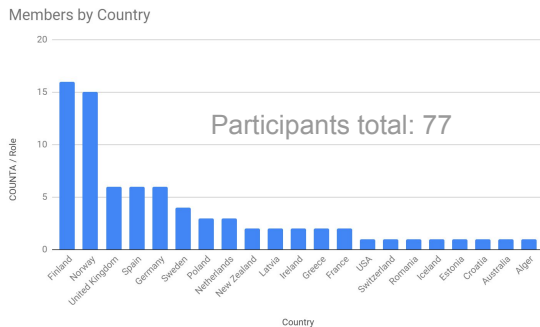
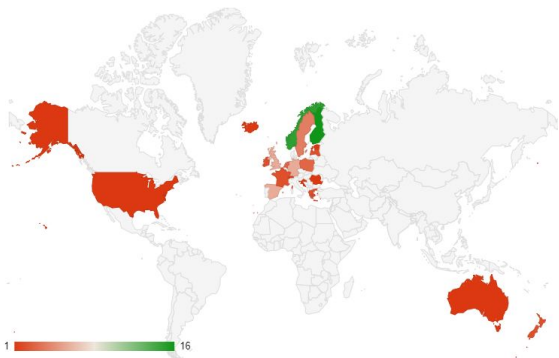




Patrik Maltusch - Aalto University
Esa Suominen - Helsinki University

EUNIS Enterprise Architecture Community

"Localization into your native language is central to embracing a model"



Thank You

