



Citrix Application Delivery Infrastructure



Company Overview



- Leader in Access Infrastructure
- NASDAQ 100 and S&P 500 company (CTXS)
- \$909 million in 2005 revenue (25% growth)
 - ~50% revenue from outside of No. America
- 3,000+ employees in 35 countries
- 6,200 partners in over 100 countries
- 180,000 customers
 - 94% customer loyalty
 - 75% of all Internet users
- Microsoft “Global ISV of the Year” 2003 and 2005



What Citrix delivers to its Education Customers



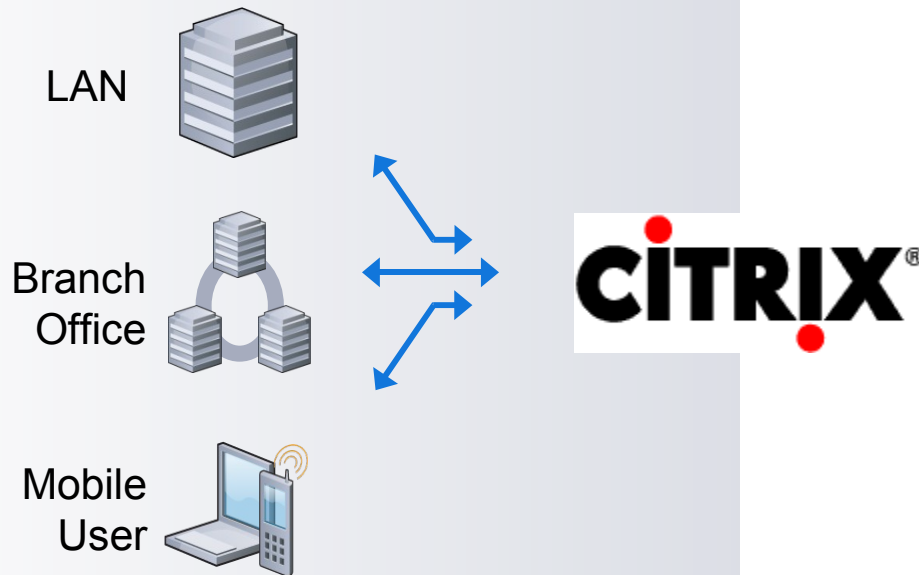
Source: Gartner, IDC, META, Forrester, CFO Magazine, Business Week, 2004



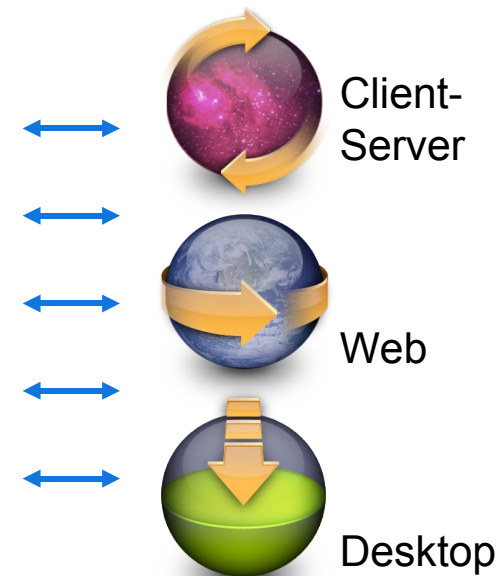
The Citrix Vision



Access Scenarios



Applications



Best Access Experience

Any Application • Any User • Any Device • Any Location



Applications from End-to-End



Users

Citrix Application Delivery Infrastructure

Any Network



Apps



Application Delivery Infrastructure



Users

Virtualize
Optimize
Stream
Share

Application
Delivery

Any
Application

Any Network



Apps



Application Delivery Infrastructure



Users



Protect
Control



Any Network



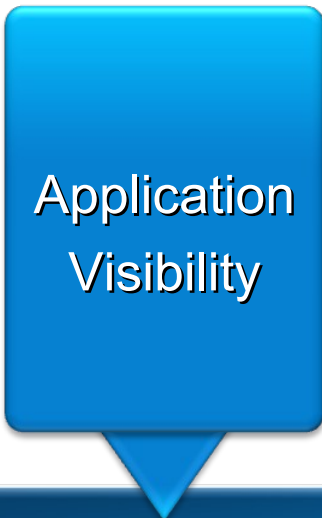
Apps



Application Delivery Infrastructure



Any
Endpoint



- Measure
- Monitor
- Manage
- Support



Users

Apps



Application Delivery Infrastructure



**Any
Endpoint**

Application
Visibility

Application
Security

Application
Delivery



**Any
Application**

Any Network

Users

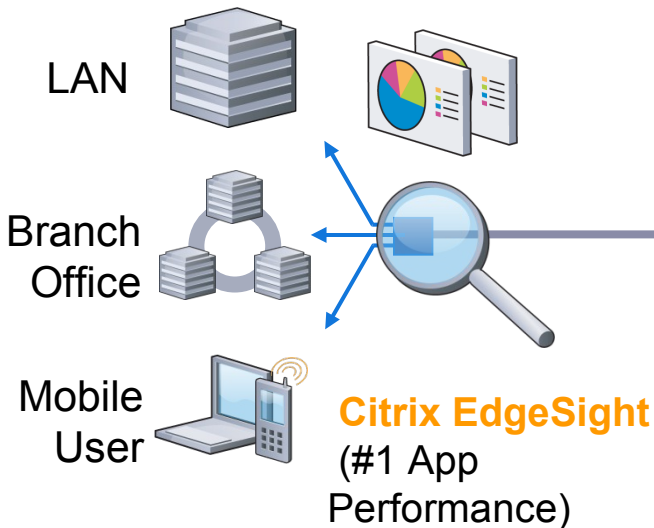
Apps



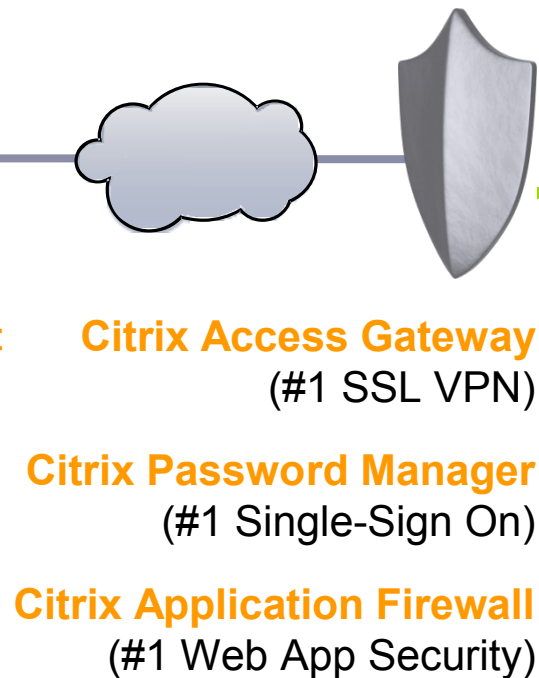
Application Delivery Infrastructure



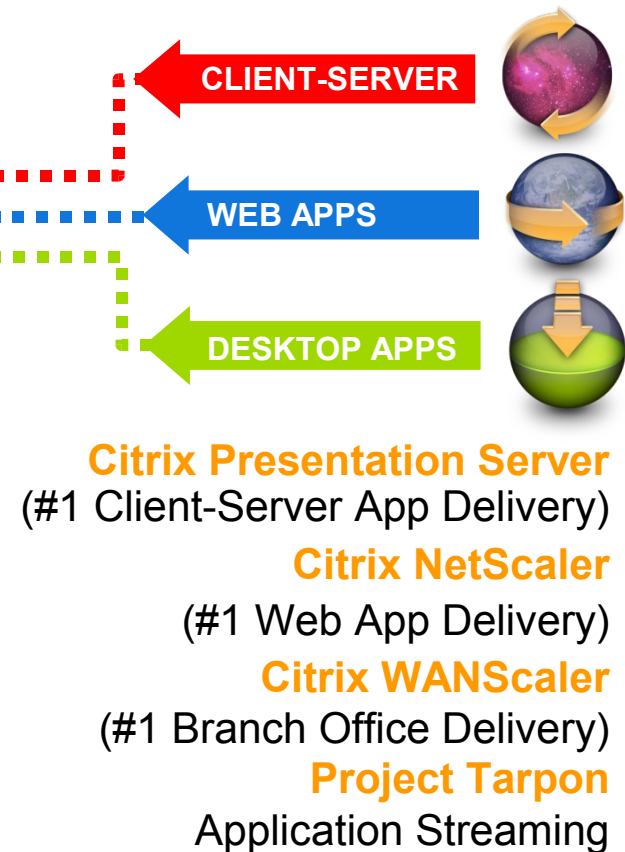
Application Visibility



Application Security



Application Delivery





Citrix Presentation Server



Client-Server App Delivery



Citrix Presentation Server

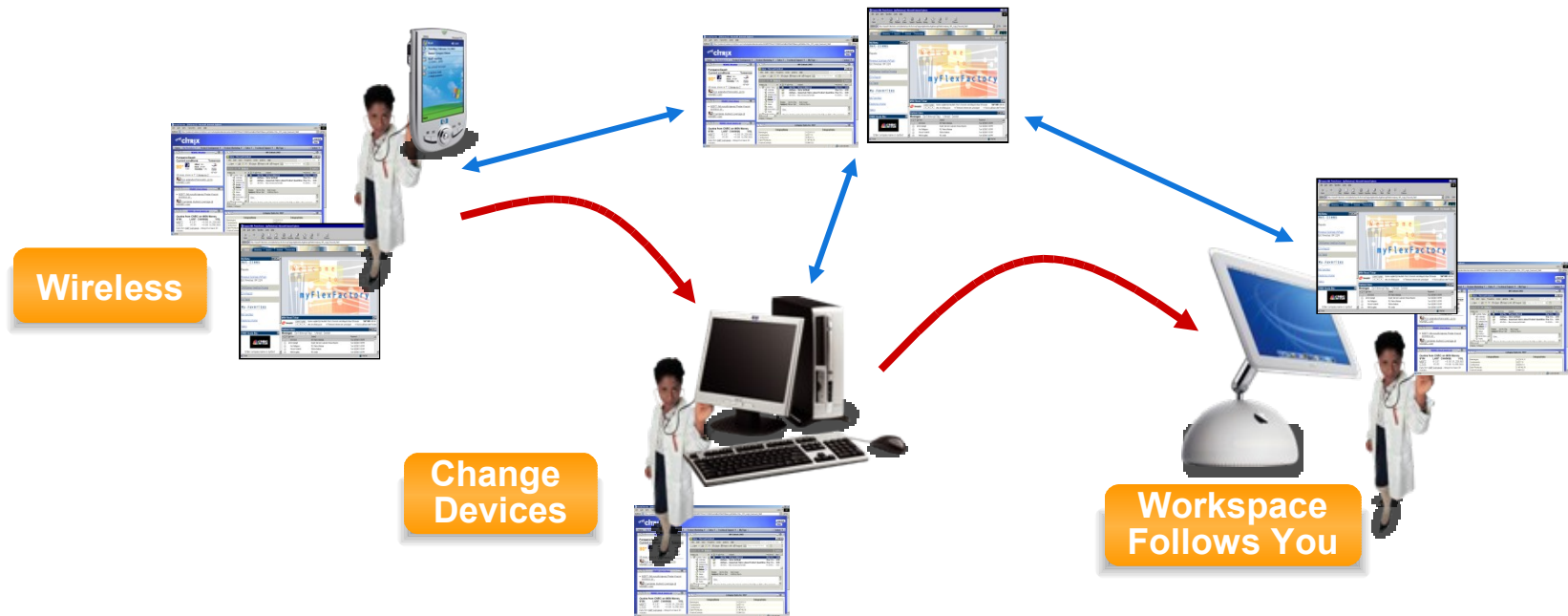
(Win32, Win64, UNIX)

- No User-Side Installs
- Max Device Flexibility
- Seamless User Mobility
- Centralized Data Security
- Low Bandwidth
- Low TCO

Citrix SmoothRoaming™ Technology



- Workspace roaming
- Always-on connectivity
- Device and network ubiquity
- Proximity printing
- System-wide single sign-on



Citrix Presentation Server Benefits



❑ Up to 25% HIGHER USER DENSITY

- ✓ CPU utilization management
- ✓ Virtual memory optimization

❑ BROADER APPLICATION SUPPORT

- ✓ Application isolation environments
- ✓ Virtual IP addresses
- ✓ USB support for ActiveSync PDAs, scanners, and cameras

❑ BETTER PRINTING

- ✓ Up to 4 times faster printing using less bandwidth and memory
- ✓ Support for all printing functions like multiple trays, stapling, etc.
- ✓ Session printer policies for printing to the nearest printer

❑ GREATER FLEXIBILITY AND CONTROL

- ✓ Windows and UNIX unified licensing
- ✓ Better troubleshooting for recurring problems by storing your own comments in My Knowledgebase

New Features & Enhancements

- Application streaming to server
- Utilizes existing session monitoring and application publishing
- Ability to use Installation Manager for pre-caching
- Same user interface – WI & PNA

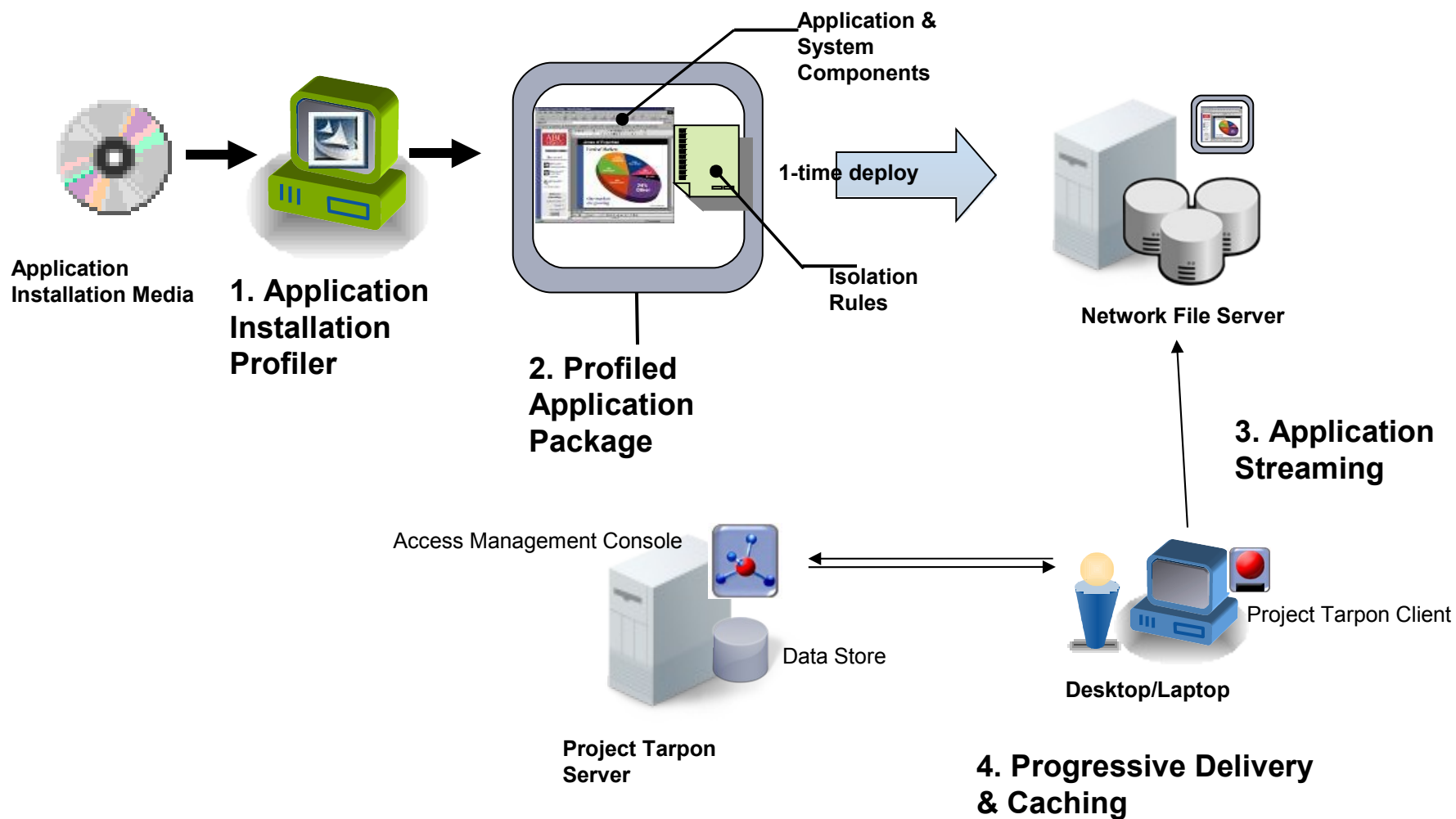


Benefits

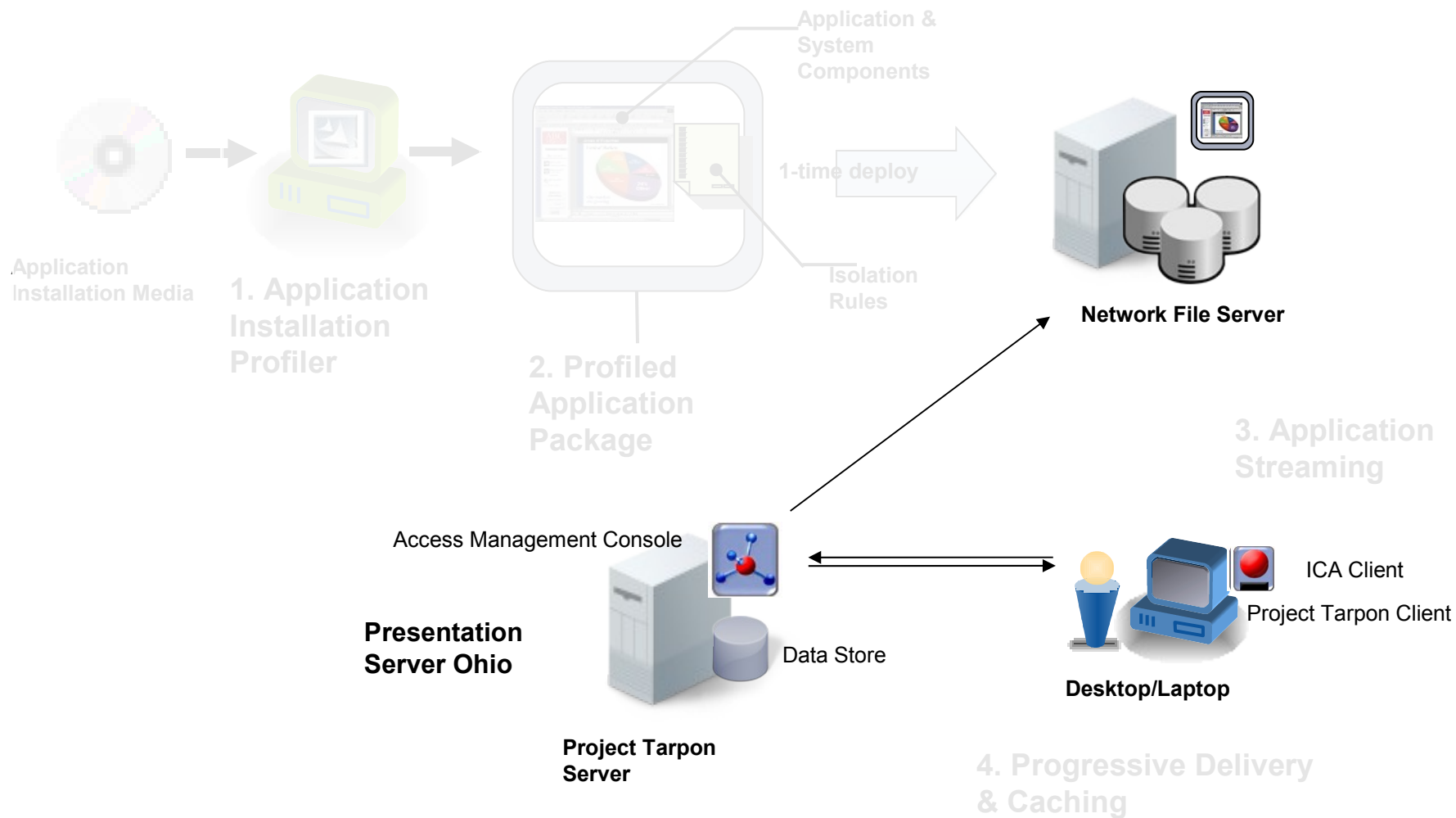
- Eliminates the need of installing applications on servers
- Simplifies replacement of servers without worrying about application installations
- Facilitates quick application updates

Enterprise Only

Ohio vs. Tarpon – With Tarpon



Ohio vs. Tarpon – With Ohio



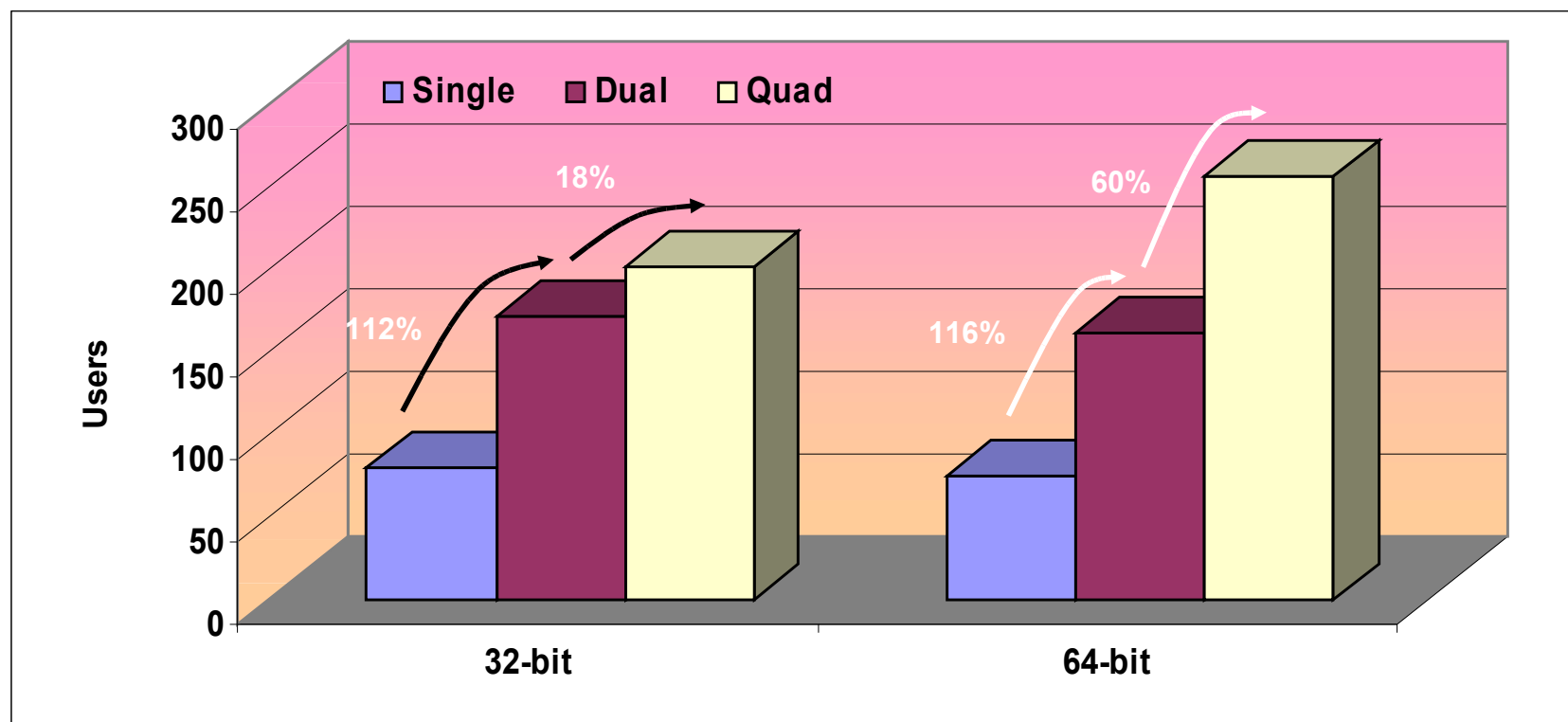


Scalability



64-bit – Leveraging Quad Servers

- Leverages the full power of quad systems
- 60% increase in users per server
 - When using quad versus dual processor servers





Citrix Password Manager

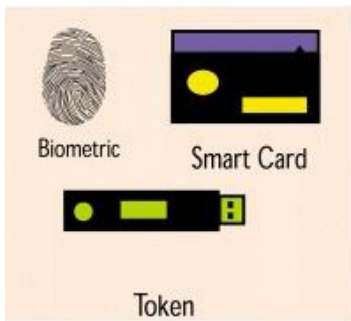


What is Citrix Password Manager?



Single Sign-On to Windows, Web and host-based applications

One Primary Logon...

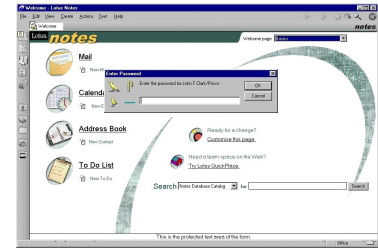


Citrix® Password Manager

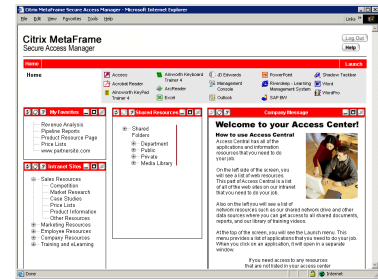
Distinct credentials for each backend application/resource

Access to Any Application

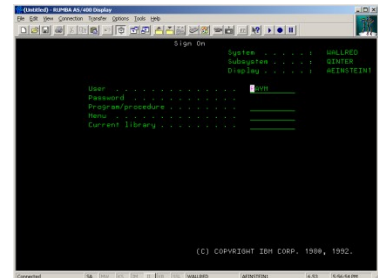
Windows



Web



Host

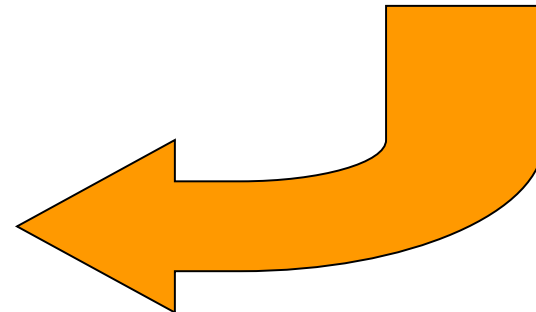


Accessing Self-Service Options

When a user realizes they have forgotten their password or are locked out



User selects
“Account Self-Service”

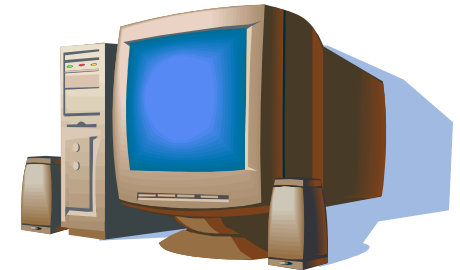


Description

- Rapid user switching for kiosks or shared workstations

Benefits

- Reduces logon times up to 90%
 - Hot Desktop uses a locked down common shared account
 - No loading or configuring of the OS Shell
 - No mapping of printers and drives
 - Optional Windows user profile loading
- Simplifies application launching and authentication
 - Special start/stop scripts can be invoked to auto-launch apps
 - Citrix Password Manager provides SSO to applications



Benefits (continued)

- Prevents Denial of Service
 - Inactivity timeout returns workstation to logon screen
 - Any user may unlock the workstation for higher availability
- Increases Productivity for Roaming Users
 - Published applications follow the user (SmoothRoaming)
 - Local applications automatically launched and signed on
 - Persistent applications may already be running
 - Workstation availability increased
- Increases Security
 - Session timeout can control duration of session
 - User logons, logouts, and password changes logged for accountability and auditing

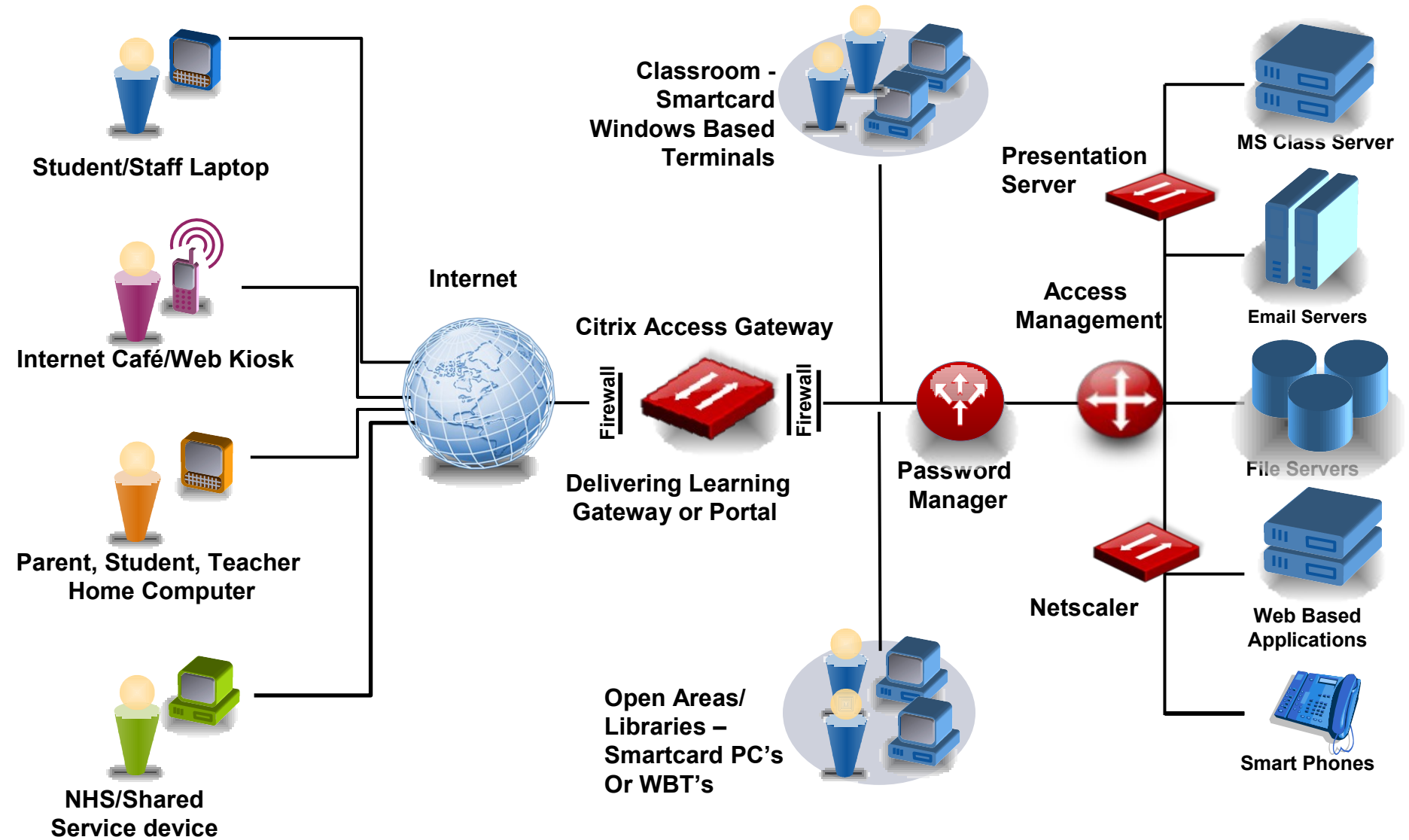




Summary



Citrix in Education - Solution Overview





Best Access Experience. Anytime. Anywhere.
