

Numbers That Drive A Sustainable Estate
A Reflection

Clive Wilson
Director of Estates and Facilities
University of Bradford



THE BIG
6

- Health and safety
- Legionella
- Corporate manslaughter
- Fire regulations
- DDA
- Asbestos

2 Schools of thought



- Climate change is happening
- Climate change is not happening



2020 - 43%

2050 - 80%



556M3

1990 - 2.458M TONNES

2006 - 3.361 M TONNES



UNIVERSITY OF BRADFORD
MAKING KNOWLEDGE WORK

Energy

2000
2015
2025
2030

estates and facilities
www.bradford.ac.uk

UNIVERSITY OF BRADFORD
MAKING KNOWLEDGE WORK

Space

17,916,815M2
8+8 OUT OF 10
29.9%
£2,891,611,762
20% IT COSTS

estates and facilities
www.bradford.ac.uk

UNIVERSITY OF BRADFORD
MAKING KNOWLEDGE WORK

IT

2020?

© www.123rf.com
estates and facilities
www.bradford.ac.uk

HOW LONG TO BUILD A
SUSTAINABLE ESTATE?
5 YRS?
10YRS?

ITS A JOURNEY

5 C'S TO SUCCESS

- COMMIT
- COERCE
- COMPILE
- COMMENCE
- CELEBRATE

ONE

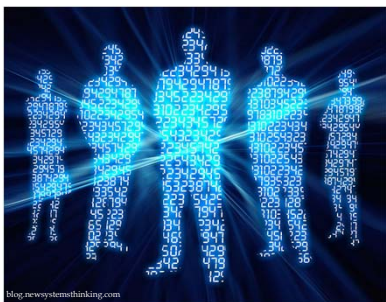


The earth is finite - there is only one earth

- | | |
|---------------------------------|-----------------------|
| Zero Carbon | Sustainable water |
| Zero Waste | Culture and heritage |
| Local and Sustainable Materials | Equity and fair trade |
| Local and sustainable food | Health and happiness |
| Natural Habitats and wildlife | Sustainable Transport |

Europe 3 planets America 5 planets

<http://www.oneplanetvision.org/>



Thanks For
Listening
